

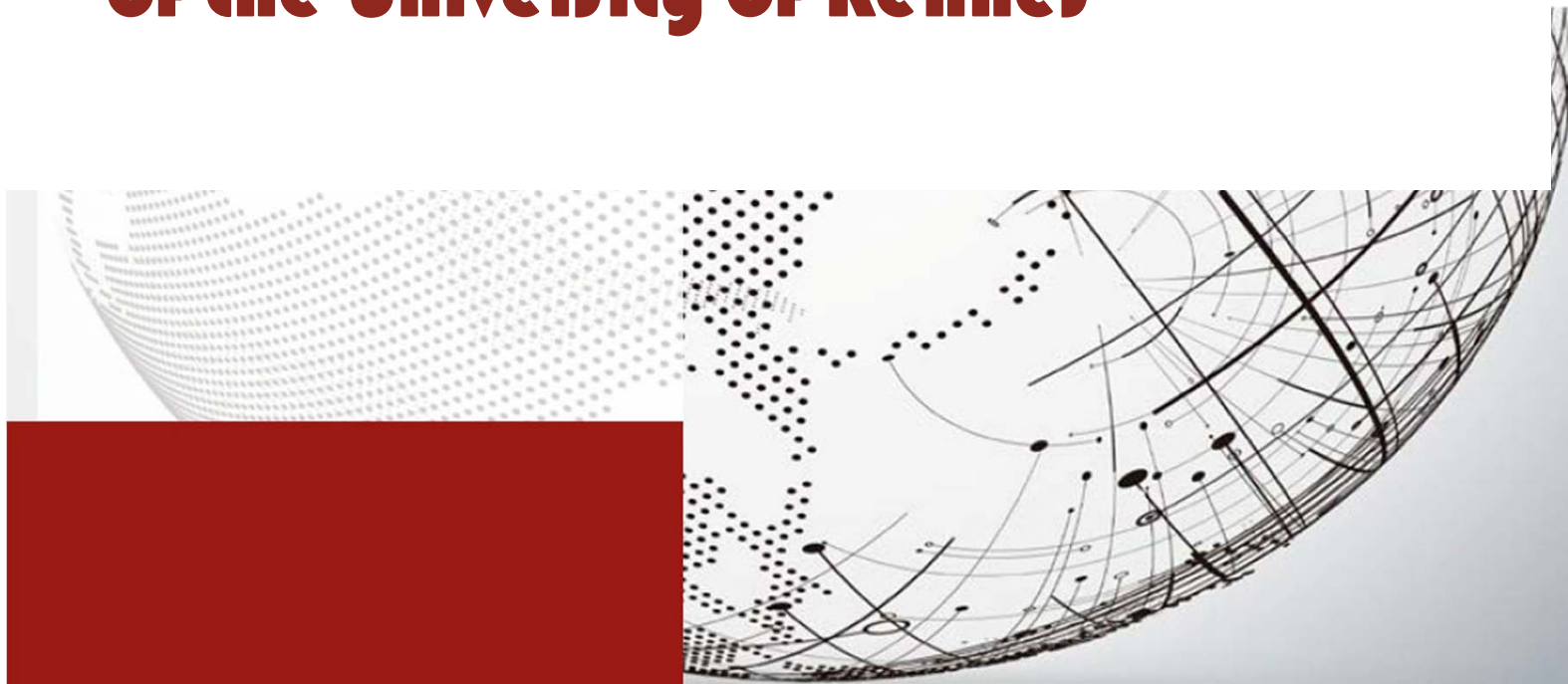


Master of Science in

ECONOMICS AND DEVELOPMENT

Double Degree Program with

- **MSc in European Economic Studies of the University of Bamberg**
- **International Master in Public Policies of the University of Rennes**





UNIVERSITÀ
DEGLI STUDI
FIRENZE

School of
Economics and
Management

FOR WHOM?

First-year students of the
curriculum Economics





Why a Double Degree?

A Double Degree is a joint program which allows you to:

- study at two economics schools, taking the best from either;
- earn two degrees, one from each university;
- gain international experience;
- be more competitive in the labour market;
- broaden your horizons;
- build strong international networks.





Program Overview (1)

Unifi students spend

- the first academic year at the University of Florence, where they earn 60 ECTS;
- the second academic year at the University of Bamberg / University of Rennes, where they earn 60 ECTS.





Program Overview (2): 1st year at Unifi

Mandatory Courses	Sem	ECTS
Game Theory and Microeconomics	1	9
Mathematics for Economics	1	9
Statistical Inference	1	6
Advanced Macroeconomics	2	9
Advanced Microeconomics	2	6
Corporate Governance, Bank Management and Sustainable Finance	2	12
One course to choose between the following	Sem	ECTS
Economic Law	1	6
International law	1	6
One LAB to choose between the following	Sem	ECTS
Stata Lab I: Software	2	3
Stata Lab II: Models and Applications	2	3





UNIVERSITÉ DE RENNES 1



@UnivRennes



UnivRennes1



@pw_researchgrou



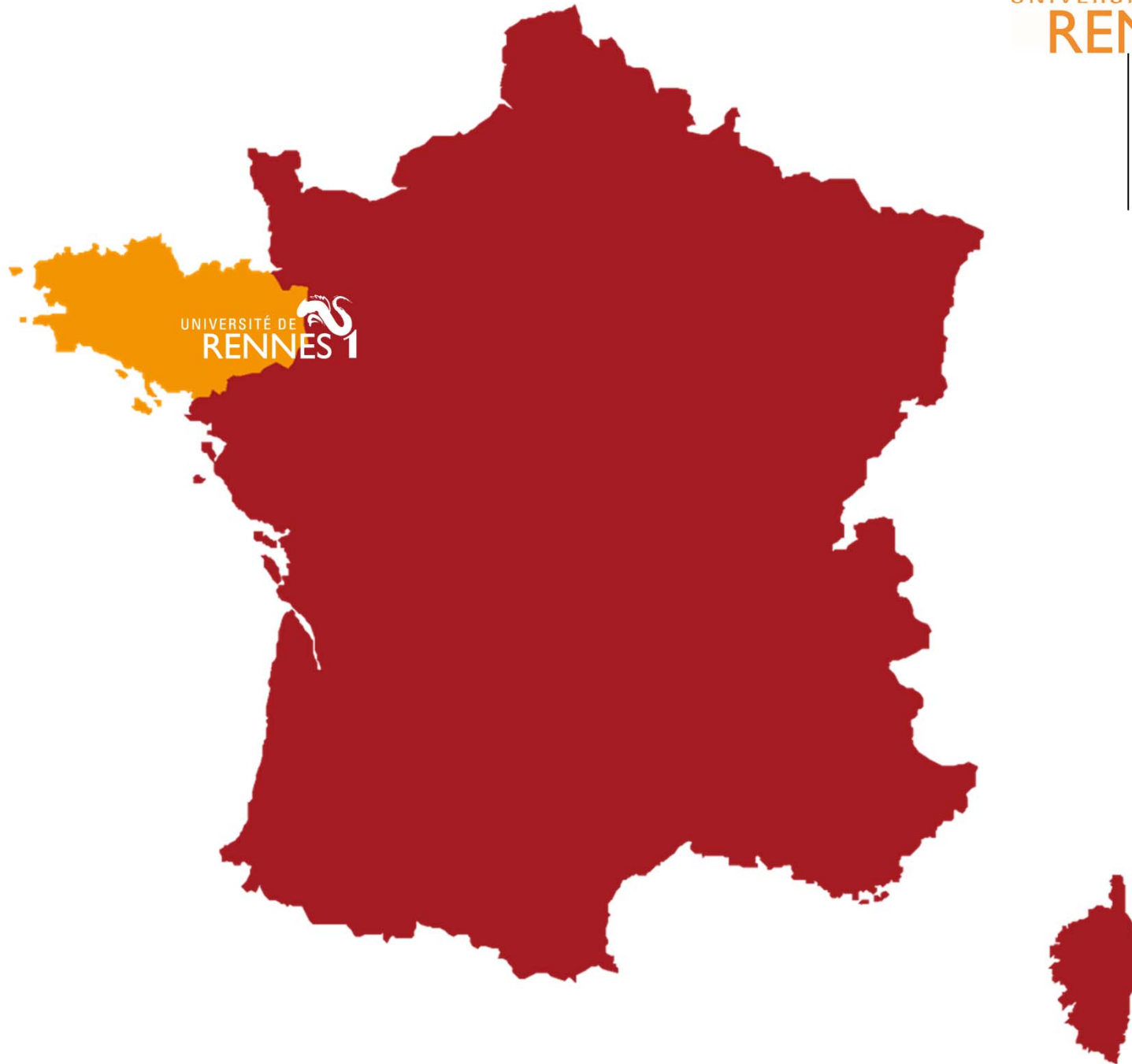
**A TRANSDISCIPLINARY
UNIVERSITY ...
29,000 STUDENTS**

Health

**Science,
Engineering
& Technology**

**Law
Economics
Management
Philosophy**

... FOUNDED ON RESEARCH

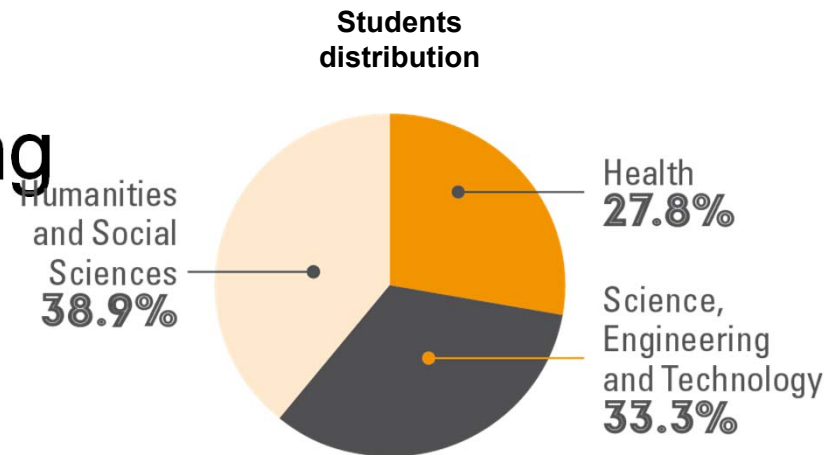


UNIVERSITÉ DE
RENNES 1



KEY FIGURES

29 000 students including
3 200 international students



3 450 faculty and staff

1 830 faculty

1 555 employees

+340 full-time researchers attached to national research organizations



KEY FIGURES

3,191
INTERNATIONAL
STUDENTS

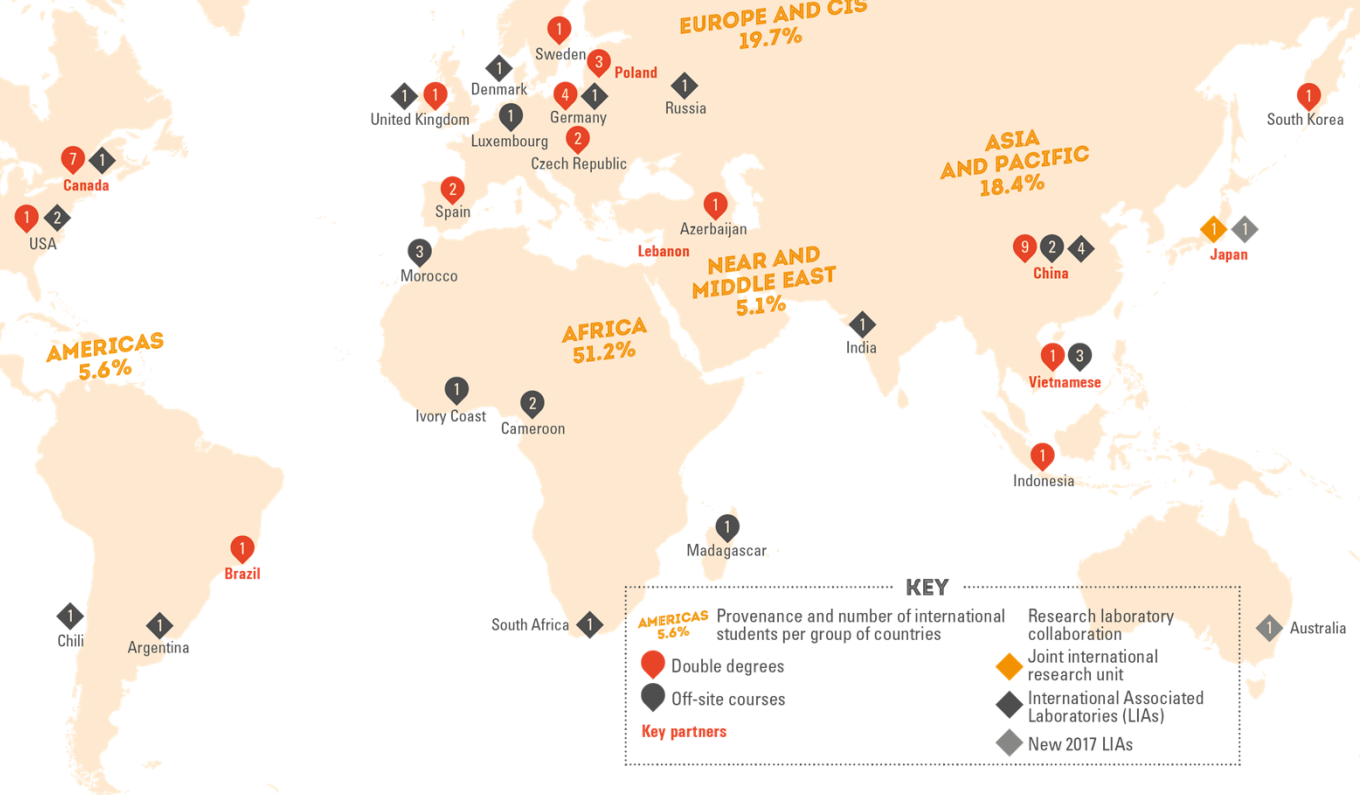
AMERICAS
5.6%

AFRICA
5.2%

**NEAR AND
MIDDLE EAST**
5.1%

EUROPE AND CIS
19.7%

**ASIA
AND PACIFIC**
18.4%



KEY

AMERICAS 5.6% Provenance and number of international students per group of countries

- Red circle: Double degrees
- Black diamond: Off-site courses
- Red diamond: Research laboratory collaboration
- Yellow diamond: Joint international research unit
- Black diamond: International Associated Laboratories (LIAs)
- Grey diamond: New 2017 LIAs



A RESEARCH-INTENSIVE UNIVERSITY



31 laboratories, in association with national organizations



Rennes, the city





International Master in Public Policies (Master 2)

1st Meeting of Master IMPP
University Rennes Dep. of Economics
(10h00-12h00) September 10th, 2024



Goals of the Master



- Teaching students the various activities of governments – expenditures policies, tax instruments, macroeconomic and regulatory policies – from three perspectives:
 - International
 - Comparative
 - Evolutionary

Why a comparative, international and evolutionary perspective?



- Two main reasons:
 - (1) Existing government policies are undergoing structural changes throughout the world
 - Financial & Covid crisis
 - Sustainability of public finances
 - Costs and efficiency of welfare states
 - Incompatibility of current tax systems with slow growing economies

Why a comparative, international and evolutionary perspective?



- Two main reasons:
 - (2) Governments reform their policies mainly by way of imitation
 - Future evolution of welfare states, tax systems and any public sector activity passes through the comparison with what other governments are doing
 - The evolutionary, comparative and international perspective on government policies are thus connected

A more durable capital of knowledge....



- The evolutionary and comparative perspective of IMPP turns a *potential contradiction*....
 - Tendency of studies in public economics to relate with national professions
-Into an *opportunity*
 - Providing students with a capital of knowledge that is more advanced and will depreciate more slowly

Organization of the courses



- IMPP is normally organized over 1 year – 2 semesters
- All courses are taught in English
- Students may choose to pursue their Ph.D. studies in Rennes after completion of the Master
- 4 main thematic groups – all of them share the comparative, international, evolutionary perspectives of the IMPP
 - Expenditure programs
 - Tax systems and organization of the state
 - Macroeconomic and regulatory policies
 - Quantitative methods

Courses semester 1



TITLE OF UE	PROF.	ECTS	TITLE OF MODULE	N. HOURS CM	N. HOURS UE
UE 1 QUANTITATIVE METHODS	Le Maux	6	Survey methods and factorial analysis	18	54
	Cadoret		Probability and statistics	18	
	Le Maux		Cost-benefit analysis	18	
UE 2 STRUCTURE OF GOVERNMENTS	Padovano	7	Advanced public choice	18	54
	Rocaboy		Applied local public finance	18	
	Rocaboy		Economics of sports (EDUC)	18	
UE 3 COMPARATIVE PUBLIC POLICIES 1	Josselin	8	Health care systems and policies	18	72
	<i>Padovano</i>		<i>Economics of social security and redistribution</i>	18	
	Regnacq		Environmental economics and policies	18	
	Josselin		Health care systems and policies	18	
UE 4 MACROECONOMIC POLICIES	Tavéra	7	Fiscal macroeconomic policies	18	54
	Poutineau		International financial and macroeconomic policies	18	
	<i>Masclat</i>		<i>Labor market policies</i>	18	
TOTAL SEMESTER 1		28		360	360

Courses semester 2



TITLE OF UE	PROF.	ECTS	TITLE OF MODULE	N. HOURS CM	N. HOURS UE
UE 5 ADVANCED ECONOMETRICS	Le Forner	8	Panel data econometrics	18	54
	Le Maux		Conterfactual impact evaluation	18	
	Cadoret		Spatial econometrics	18	
UE 6 COMPARATIVE PUBLIC POLICIES 2	Padovano	5	Economics of the arts and of cultural policies	12	36
	Thelen		Economics of conflicts and defence	12	
	Josselin		Economics of education	12	
UE 7 COMPARATIVE TAX POLICIES	Padovano	5	Advanced tax theory	18	36
	Padovano		International taxation	18	
UE 8 RESEARCH ORIENTED COURSES	Padovano	6	Scientific writing and publishing	4	52
	Masclet		Experimental economics	18	
	L'Haridon		Behavioral public policies	18	
	Padovano		Introduction to law and economics	12	
UE 9 THESIS		8	Thesis	30	30
TOTAL SEMESTER 2		32			214
TOTAL IMPD		60			440

Calendar, grades and thesis



Oct.	Nov.	Dec.	Jan.	Feb.	Mar.	Apr.	May	Jun.	Jul.	Aug.	Sep.
SEMESTER 1			SEMESTER 2			Internship or Master Thesis					
Lectures	Holidays	Lectures	Holidays	Lectures	Holidays	Lectures	Thesis or internship	Defense - date 1	Thesis or internship	Defense - date 2	

- Dec.14/Jan.08: Vacances de Noël (Christmas holydays)
- Grades and tests: Continuous assessment
- Lectures finish by the end of March
- Afterwards, students will work full time on the master thesis
- Two dates for the defense :
 - (1) in June,
 - (2) in September.

Master thesis



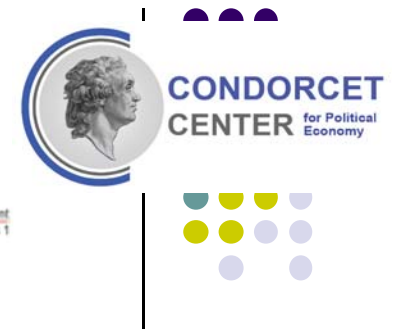
- **Master thesis**
- We propose several fields of competence:
 - “Public finance”, “Public choice”, “Public health”, “Environmental Economics”, “Labor policies”, “Inequalities and Urban Segregation”, “Sports Economics”, “Peace and Defense Economics”
“Behavioral and Experimental Public Economics”
- Approximate deadline for the last (approved) version of the thesis: one week before the defense

Typical professional employments



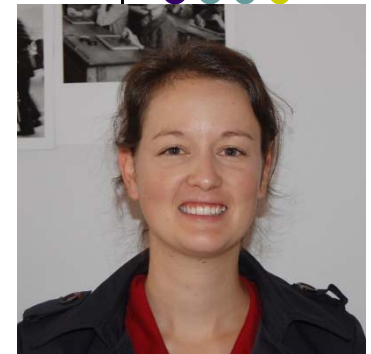
- Graduates from IMPP will be active and dynamic players in processes of management and reform of public sector activities and agencies, in a plurality of institutional contexts and countries.
- They are typically employed in:
 - International organizations (EU, IMF, OECD, etc)
 - National administrations at the central and local levels
 - Banks and financial institutions, especially in the assessment of country specific risks and policy evaluations
 - Private firms/consulting firms dealing with public sector agencies
 - Nonprofit organizations and think-tanks

Exposure to research



- IMPP students are encouraged to learn from research activities of the faculty
 - The *Center for Research in Economics and Management* (CREM UMR 6211) is a Research Unit jointly supported by [CNRS](#), [Université of Rennes 1](#) and [University of Caen Normandie](#).
 - The *Condorcet Center for Political Economy* is a research institute related to the CREM center that
 - Promotes workshops
 - Invites international scholars (more than 100 since 2011)
 - Publishes working papers
 - On the CREM and Condorcet websites you can find many informations about our lab'. Please feel free to consult the regular website. Many informations are in English there.

Some faculty members





Selection procedure for both UBamberg and URennes

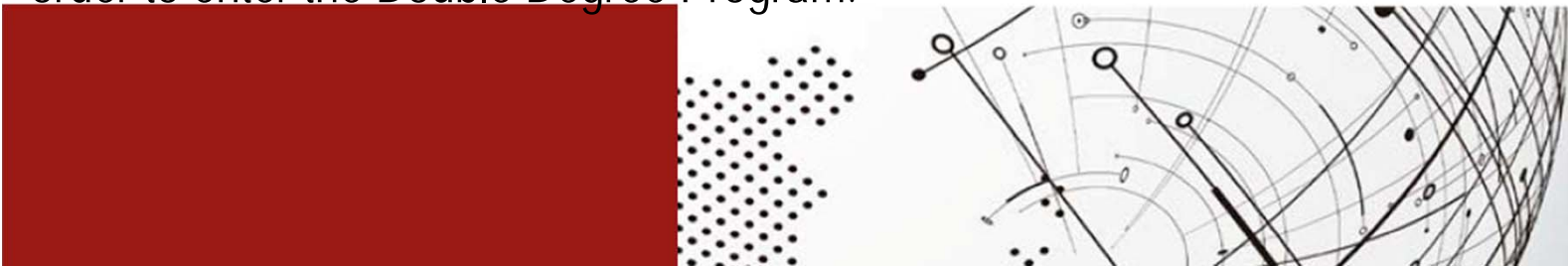
The call for applications will appear in January 2025 in the MSc webpage about these programs. It will remain open until the end of the Winter Exam Session (February 22, 2025).

Five positions will be available for each program.

Applicants will be selected according to

- Final grade of the Bachelor degree;
- Motivation letter;
- ECTS and grades earned at the exams of the courses Game Theory and Microeconomics, Mathematics for Economics, Stat. Inference;
- If two or more applicants have the same rank, then certified knowledge of the German / French language and ECTS and grades earned at other exams of the first semester of the first year of the MSc Economics and Development will be considered.

The selected students need to earn 42 ECTS at Unifi by September 2025 in order to enter the Double Degree Program.





Tuition fees, Financial support for both UBamberg and URennes

Students entering either Double Degree Program pay tuition fees only at Unifi for both years, and receive from Unifi an Erasmus+ scholarship. The MSc webpages about double degrees include a link to a document which provides information about the scholarships.

